

**PZ249E**  
**P-21x Piezo Actuator**  
**User Manual**

Version: 1.1.3

Date: 24.01.2024



**This document describes the following products:**

- **P-212**  
Preloaded piezo actuator  
P-212.10/.20/.40/.80: without sensor  
P-212.10V/.20V/.40V/.80V: without sensor;  
high-temperature range and high vacuum  
P-212.1S/.2S/.4S/.8S: with sensor  
P-212.1SV/.2SV/.4SV/.8SV: with sensor; high-  
temperature range and high vacuum
- **P-216**  
Preloaded piezo actuator  
P-216.10/.20/.40/.80/.90: without sensor  
P-216.10V/.20V/.40V/.80V/.90V: with sensor;  
high-temperature range and high vacuum  
P-216.1S/.2S/.4S/.8S/.9S: with sensor  
P-216.1SV/.2SV/.4SV/.8SV/.9SV: with sensor;  
high-temperature range and high vacuum



The following company names and brands are registered trademarks of Physik Instrumente (PI) GmbH & Co. KG:

PI®, NanoCube®, PICMA®, PILine®, NEXLINE®, PiezoWalk®, NEXACT®, Picoactuator®, Plnano®, PIMag®, Q-Motion®

© 2024 Physik Instrumente (PI) GmbH & Co. KG, Karlsruhe, Germany. The text, photographs and drawings in this manual are protected by copyright. With regard thereto, Physik Instrumente (PI) GmbH & Co. KG retains all the rights. Use of said text, photographs and drawings is permitted only in part and only upon citation of the source.

Original instructions

First printing: 24.01.2024

Document number: PZ249E, CBo / KSch, version 1.1.3

Subject to change without notice. This manual is superseded by any new release. The latest release is available for download (p. 3) on our website.

# Contents

<b>1</b>	<b>About this Document</b>	<b>1</b>
1.1	Objective and Target Group of this User Manual .....	1
1.2	Symbols and Typographic Conventions.....	1
1.3	Figures .....	2
1.4	Other Applicable Documents .....	2
1.5	Downloading Manuals.....	3
<b>2</b>	<b>Safety</b>	<b>5</b>
2.1	Intended Use .....	5
2.2	General Safety Instructions .....	5
2.3	Organizational Measures.....	6
<b>3</b>	<b>Product Description</b>	<b>7</b>
3.1	Model Overview .....	7
3.2	Product View .....	9
3.2.1	Overview.....	9
3.2.2	Product Labeling.....	10
3.3	Scope of Delivery.....	11
3.4	Suitable Electronics .....	11
3.5	Accessories .....	12
3.6	Technical Features.....	14
3.6.1	PICA Piezo Actuators .....	14
3.6.2	Strain Gauge Sensors (SGS) .....	14
<b>4</b>	<b>Unpacking</b>	<b>15</b>
<b>5</b>	<b>Installation</b>	<b>17</b>
5.1	General Notes on Installing .....	17
5.2	Connecting the P-21x to the Protective Earth Conductor.....	20
5.3	Mounting the P-21x.....	21
5.4	Optional: Mounting a Tip .....	22
5.5	Fixing the Load.....	23
5.6	Optional: Connecting the Purge Air .....	23
<b>6</b>	<b>Starting and Operating</b>	<b>25</b>
6.1	General Notes on Starting and Operating.....	25
6.2	Determining the Operating Parameters.....	28

6.2.1	Overview of Limiting Factors .....	28
6.2.2	Calculating the Effective Mass .....	29
6.2.3	Calculating the Maximum Operating Frequency of the Loaded Piezo Actuator .....	29
6.2.4	Calculating the Forces that Occur During Dynamic Operation .....	30
6.2.5	Calculating the Power Requirement for Sinusoidal Operation .....	30
6.3	Operating the P-21x .....	31
6.4	Discharging the P-21x .....	32
<b>7</b>	<b>Maintenance</b>	<b>33</b>
7.1	General Notes on Maintenance .....	33
7.2	Cleaning the P-21x .....	33
<b>8</b>	<b>Troubleshooting</b>	<b>35</b>
<b>9</b>	<b>Customer Service</b>	<b>37</b>
<b>10</b>	<b>Technical Data</b>	<b>39</b>
10.1	Specifications .....	39
10.1.1	Data Table .....	39
10.1.2	Maximum Ratings .....	41
10.1.3	Ambient Conditions and Classifications .....	42
10.2	Dimensions .....	43
10.2.1	P-21x Piezo Actuator .....	43
10.2.2	P-21x with P-177.50 Option (Temperature Sensor and Purge Air Connector) .....	44
10.2.3	P-21x with the P-706.00 Option (Water-Resistant Housing) .....	44
10.2.4	P-176.B12 Ball Tip .....	45
10.2.5	P-176.F16 Flat Tip .....	45
10.2.6	P-176.10 Magnetic Adapter .....	46
10.2.7	Vacuum Feedthrough for High-Voltage Piezo Actuators .....	46
10.2.8	Vacuum Feedthroughs for Sensors .....	47
10.3	Pin Assignment .....	48
10.3.1	Voltage Connection .....	48
10.3.2	Connection of the Position Sensor .....	48
10.3.3	Connection of the Temperature Sensor .....	48
<b>11</b>	<b>Old Equipment Disposal</b>	<b>49</b>
<b>12</b>	<b>European Declarations of Conformity</b>	<b>51</b>

# 1 About this Document

## In this Chapter

Objective and Target Group of this User Manual .....	1
Symbols and Typographic Conventions .....	1
Figures.....	2
Other Applicable Documents.....	2
Downloading Manuals .....	3

## 1.1 Objective and Target Group of this User Manual

This user manual contains the information required for using the P-21x as intended ("x" stands for the different models (p. 7)).

Basic knowledge of control technology, drive technologies, and suitable safety measures is assumed.

The latest versions of the user manuals are available for download (p. 3) on our website.

## 1.2 Symbols and Typographic Conventions

The following symbols and typographic conventions are used in this user manual:

### **DANGER**



#### **Immediate threat of danger**

Failure to comply could lead to death or serious injury.

- Precautionary measures for avoiding the risk.

### **CAUTION**



#### **Dangerous situation**

Failure to comply could lead to minor injuries or cause damage to equipment.

- Precautionary measures for avoiding the risk.

### **NOTICE**





#### **Dangerous situation**

Failure to comply could cause damage to equipment.

- Precautionary measures for avoiding the risk.

**INFORMATION**

Information for easier handling, tricks, tips, etc.

Symbol/Label	Meaning
1. 2.	Action consisting of several steps whose sequential order must be observed
➤	Action consisting of one or several steps whose sequential order is irrelevant
▪	List item
p. 5	Cross-reference to page 5
RS-232	Labeling of an operating element on the product (example: socket of the RS-232 interface)
	Warning signs fixed to the product that refer to detailed information in this manual.
	

**1.3 Figures**

For better understandability, the colors, proportions, and degree of detail in illustrations can deviate from the actual circumstances. Photographic illustrations may also differ and must not be seen as guaranteed properties.

**1.4 Other Applicable Documents**

The devices and software tools from PI mentioned in this documentation are described in separate manuals.

The latest versions of the user manuals are available for download (p. 3) on our website.

Product	Document
E-421.00: High-power piezo amplifier module	PZ178E User Manual
E-470.20: High-power piezo amplifier	PZ178E User Manual
E-471.20: High-power piezo amplifier	PZ178E User Manual
E-472.20: High-power piezo amplifier, 2 channels	PZ178E User Manual
E-462.00: HVPZT piezo amplifier	PZ210E User Manual
E-462.OE1: HVPZT high-power piezo amplifier, 10 to 1000 V, OEM version	PZ210E User Manual
E-464.00: HVPZT piezo amplifier, 3 channels	PZ176E User Manual
E-481.00: High-power piezo amplifier / controller	PZ170E User Manual

Product	Document
E-482.00: PICA high-power piezo amplifier / controller	PZ236E User Manual
E-500: Modular piezo controller	PZ62E User Manual

## 1.5 Downloading Manuals

### **INFORMATION**

If a manual is missing or problems occur with downloading:

- Contact our customer service department (p. 37).

### **Downloading manuals**

1. Open the website **www.pi.ws**.
2. Search the website for the product number (e.g., P-21x).
3. In the search results, select the product to open the product detail page.
4. Select **Downloads**.

The manuals are shown under **Documentation**. Software manuals are shown under **General Software Documentation**.

5. For the desired manual, select **ADD TO LIST** and then **REQUEST**.
6. Fill out the request form and select **SEND REQUEST**.

The download link will be sent to the email address entered in the form.





## 2 Safety

### In this Chapter

Intended Use.....	5
General Safety Instructions.....	5
Organizational Measures.....	6

### 2.1 Intended Use

The P-21x is a laboratory device as defined by DIN EN 61010-1. It is intended to be used in interior spaces and in an environment which is free of dirt, oil and lubricants.

In accordance with its design, the P-21x is intended for the following applications:

- Positioning of high loads; see "Specifications" (p. 39)
- Dynamic positioning
- Vibration damping
- Force generation

The motion takes place in one axis.

The specifications of the P-21x apply to mounting with a vertically oriented motion axis. Mounting with a horizontally oriented motion axis is not recommended.

The intended use of the P-21x is only possible in a completely mounted and connected state and only in combination with suitable drive or control electronics (p. 11) available from PI. The electronics is not included in the scope of delivery of the P-21x.

The electronics must provide the required operating voltages. To ensure proper performance of the position control, the electronics must also be able to read out and process the signals from the position sensors.

### 2.2 General Safety Instructions

The P-21x is built according to state-of-the-art technology and recognized safety standards. Improper use can result in personal injury and/or damage to the P-21x.

- Use the P-21x for its intended purpose only, and only when it is in perfect technical condition.
- Read the user manual.
- Eliminate any malfunctions that may affect safety immediately.

The operator is responsible for the correct installation and operation of the P-21x.

Temperature changes and compressive stresses can induce charges in the P-21x piezo actuator. After being disconnected from the electronics, the piezo actuator can stay charged for several hours. Touching the live parts of the P-21x can result in serious injury or death from electric shock.

- Do **not** open the P-21x.

If a protective earth conductor is not or not properly connected, dangerous touch voltages can occur on the P-21x in the case of malfunction or failure of the system. If there are touch voltages, touching the P-21x can result in serious injury or death from electric shock.

- Connect the P-21x to a protective earth conductor (p. 20) before starting.
- Do **not** remove the protective earth conductor during operation.
- If the protective earth conductor has to be removed temporarily (e.g., in the case of modifications), reconnect the P-21x to the protective earth conductor before restarting.

Mechanical forces can damage or misalign the P-21x.

- Avoid knocks that affect the P-21x.
- Do **not** drop the P-21x.
- Avoid torques, bending forces, and lateral forces on the tip of the P-21x.
- Do **not** exceed the maximum permissible loads (p. 39).

## 2.3 Organizational Measures

### User Manual

- Always keep this user manual together with the P-21x.  
The latest versions of the user manuals are available for download (p. 3) on our website.
- Add all information from the manufacturer to the user manual, for example, supplements or technical notes.
- If you give the P-21x to a third party, include this user manual as well as other relevant information provided by the manufacturer.
- Do the work only if the user manual is complete. Missing information due to an incomplete user manual can lead to serious or fatal injuries as well as damage to the equipment.
- Install and operate the P-21x only after you have read and understood this user manual.

### Personnel Qualification

The P-21x may only be installed, started, operated, maintained, and cleaned by authorized and appropriately qualified personnel.

## 3 Product Description

### In this Chapter

Model Overview.....	7
Product View.....	9
Scope of Delivery .....	11
Suitable Electronics.....	11
Accessories.....	12
Technical Features .....	14

### 3.1 Model Overview

#### **INFORMATION**

Optional accessories are available for the P-21x piezo actuators that have to be integrated during the manufacturing of the P-21x (p. 12). If a P-21x piezo actuator is ordered with these options, it receives a customer-specific product number (beginning with "P-21xK").

This manual also applies to all piezo actuators that have a customer-specific product number due to integrated options.

#### **Piezo actuators without a sensor**

Model	Description
P-212.10	Preloaded piezo actuator, 15 µm, 1000 V, 2000 N
P-212.20	Preloaded piezo actuator, 30 µm, 1000 V, 2000 N
P-212.40	Preloaded piezo actuator, 60 µm, 1000 V, 2000 N
P-212.80	Preloaded piezo actuator, 120 µm, 1000 V, 2000 N
P-216.10	Preloaded piezo actuator, 15 µm, 1000 V, 4500 N
P-216.20	Preloaded piezo actuator, 30 µm, 1000 V, 4500 N
P-216.40	Preloaded piezo actuator, 60 µm, 1000 V, 4500 N
P-216.80	Preloaded piezo actuator, 120 µm, 1000 V, 4500 N
P-216.90	Preloaded piezo actuator, 180 µm, 1000 V, 4500 N

### Piezo actuators without a sensor, suitable for high-temperature range and high vacuum

Model	Description
P-212.10V	Preloaded piezo actuator, 15 $\mu\text{m}$ , 1000 V, 2000 N, high temperature / vacuum
P-212.20V	Preloaded piezo actuator, 30 $\mu\text{m}$ , 1000 V, 2000 N, high temperature / vacuum
P-212.40V	Preloaded piezo actuator, 60 $\mu\text{m}$ , 1000 V, 2000 N, high temperature / vacuum
P-212.80V	Preloaded piezo actuator, 120 $\mu\text{m}$ , 1000 V, 2000 N, high temperature / vacuum
P-216.10V	Preloaded piezo actuator, 15 $\mu\text{m}$ , 1000 V, 4500 N, high temperature / vacuum
P-216.20V	Preloaded piezo actuator, 30 $\mu\text{m}$ , 1000 V, 4500 N, high temperature / vacuum
P-216.40V	Preloaded piezo actuator, 60 $\mu\text{m}$ , 1000 V, 4500 N, high temperature / vacuum
P-216.80V	Preloaded piezo actuator, 120 $\mu\text{m}$ , 1000 V, 4500 N, high temperature / vacuum
P-216.90V	Preloaded piezo actuator, 180 $\mu\text{m}$ , 1000 V, 4500 N, high temperature / vacuum

### Piezo actuators with sensor

Model	Description
P-212.1S	Preloaded piezo actuator, 15 $\mu\text{m}$ , 1000 V, 2000 N, SGS
P-212.2S	Preloaded piezo actuator, 30 $\mu\text{m}$ , 1000 V, 2000 N, SGS
P-212.4S	Preloaded piezo actuator, 60 $\mu\text{m}$ , 1000 V, 2000 N, SGS
P-212.8S	Preloaded piezo actuator, 120 $\mu\text{m}$ , 1000 V, 2000 N, SGS
P-216.1S	Preloaded piezo actuator, 15 $\mu\text{m}$ , 1000 V, 4500 N, SGS
P-216.2S	Preloaded piezo actuator, 30 $\mu\text{m}$ , 1000 V, 4500 N, SGS
P-216.4S	Preloaded piezo actuator, 60 $\mu\text{m}$ , 1000 V, 4500 N, SGS
P-216.8S	Preloaded piezo actuator, 120 $\mu\text{m}$ , 1000 V, 4500 N, SGS
P-216.9S	Preloaded piezo actuator, 180 $\mu\text{m}$ , 1000 V, 4500 N, SGS

### Piezo actuators with sensor, suitable for high-temperature range and high vacuum

Model	Description
P-212.1SV	Preloaded piezo actuator, 15 $\mu\text{m}$ , 1000 V, 2000 N, SGS, high temperature / vacuum
P-212.2SV	Preloaded piezo actuator, 30 $\mu\text{m}$ , 1000 V, 2000 N, SGS, high temperature / vacuum
P-212.4SV	Preloaded piezo actuator, 60 $\mu\text{m}$ , 1000 V, 2000 N, SGS, high temperature / vacuum
P-212.8SV	Preloaded piezo actuator, 120 $\mu\text{m}$ , 1000 V, 2000 N, SGS, high temperature / vacuum
P-216.1SV	Preloaded piezo actuator, 15 $\mu\text{m}$ , 1000 V, 4500 N, SGS, high temperature / vacuum

Model	Description
P-216.2SV	Preloaded piezo actuator, 30 µm, 1000 V, 4500 N, SGS, high temperature / vacuum
P-216.4SV	Preloaded piezo actuator, 60 µm, 1000 V, 4500 N, SGS, high temperature / vacuum
P-216.8SV	Preloaded piezo actuator, 120 µm, 1000 V, 4500 N, SGS, high temperature / vacuum
P-216.9SV	Preloaded piezo actuator, 180 µm, 1000 V, 4500 N, SGS, high temperature / vacuum

## 3.2 Product View

### 3.2.1 Overview

The figure serves as an example and can differ from your model.



Figure 1: Example of product view

- 1 Housing, consisting of:
    - 1a: Base with wrench flats
    - 1b: Housing tube
 Not shown here: Optional inlets and outlets for purge air, optional water protection
  - 2 Tip with wrench flat and M5 (P-212) or M6 (P-216) inner thread
  - 3 Cable exit for piezo voltage  
Not shown here: Cable exits for sensors
  - 4 Protective earth connector
- Arrow: Positive direction of motion of the tip

### 3.2.2 Product Labeling







Labeling	Description
	Data matrix code (example; contains the serial number)
P-216.40	Product number (example), the digits after the period refer to the model
123456789	Serial number (example), individual for each P-21x Meaning of each position (from the left): 1 = internal information 2 and 3 = year of manufacture 4 to 9 = consecutive number
	Manufacturer's logo
	Warning sign "Pay attention to the manual!"
	Old equipment disposal (p. 49)
Country of origin: Germany	Country of origin
WWW.PI.WS	Manufacturer's address (website)
	CE conformity mark
	Symbol for the protective earth conductor, marks the protective earth connector of the P-21x (p. 20)



Figure 2: P-21x: Warning sign "DANGER" on voltage connection (with attached shorting plug): Indicates risk of electric shock (p. 5)

### 3.3 Scope of Delivery

Product no.	Description
P-21x	Piezo actuator according to order (p. 7)
000036450	M4 screw set for protective earth, consisting of: <ul style="list-style-type: none"> <li>1 M4x8 flat-head screw with cross recess, ISO 7045</li> <li>2 safety washers</li> <li>2 flat washers</li> </ul>
P-202.01	Shorting plug for high-voltage piezo actuators
PZ246EK	Short instructions for "PICA Piezo Actuators 1000 V"

### 3.4 Suitable Electronics

You need electronics to operate a P-21x. The device is selected depending on the type of application. The table below lists the suitable devices.

Product no.	Description
E-421.00	High-power piezo amplifier module, without housing, 1 channel, 1100 V voltage range, 550 W, integrated power supply
E-470.20	High-power piezo amplifier, 1 channel, 1100 V voltage range, 550 W, benchtop device
E-471.20	High-power piezo amplifier, 1 channel, 1100 V voltage range, 550 W, 19", prepared for servo controller and display / PC interface
E-472.20	2-channel high-power piezo amplifier, 1100 V voltage range, 550 W, 19"
E-462.00	HVPZT Piezo amplifier, 10 to 1000 V, benchtop device
E-462.OE1	HVPZT Piezo amplifier module, 10 to 1000 V, OEM Version

Product no.	Description
E-464.00	HVPZT piezo amplifier, 3 channels, 1100 V voltage range, benchtop device
E-481.00	PICA high-performance piezo amplifier / controller with energy recovery, 1100 V voltage range, 2000 W, 19"
E-482.00	PICA high-performance piezo amplifier / controller with energy recovery, 1050 V, 6 A, 19"
E-500	Modular piezo controller (example configuration) High-voltage piezo amplifier for PICA HVPZT, 3 channels, with PC interface and display, consisting of: 1 × E-500.00 19" housing for modular piezo controller system, 1 to 3 channels 3 × E-508.00 HVPZT piezo amplifier module, 3 to 1100 V, 1 channel 1 × E-518.I3 Interface module, 3 channels, TCP/IP, USB, and RS-232 interfaces Optionally as high-voltage amplifier / servo controller additionally with: 1 × E-509.S3 Sensor / servo controller module, strain gauge sensors, 3 channels

- To order, contact our customer service department (p. 37).
- Before selecting electronics, calculate the power requirements of your application (p. 30).

### 3.5 Accessories

For production-related reasons, the P-177.50 and P-706.00 options must be ordered together with the P-21x piezo actuator. Piezo actuators equipped with these options have a customer-specific product number (begins with "P-21xK").

Product no.	Description
P-177.50	PT1000 temperature sensor and purge air connector for PICA high-voltage piezo actuators (with E-481 and E-482 controllers)
P-706.00	Splash-proof housing (IP64), for P-212 and P-216
P-176.B12	Ball tip, contact surface hardened and polished, for P-212
P-176.F16	Flat tip, contact surface hardened and polished, for P-216
P-176.10	Magnetic adapter for P-212
P-203.VA	Vacuum feedthrough for high-voltage piezo actuators, to 10 <sup>-6</sup> hPa, 100 °C, consisting of: <ul style="list-style-type: none"> <li>▪ Vacuum feedthrough LEMO SJG.0B.701.CJA.1173</li> <li>▪ Air-side cable with 2 LEMO connectors, 2 m</li> </ul>
P-892.VA	Vacuum feedthrough strain gauge sensor, to 10 <sup>-6</sup> hPa, 100 °C, consisting of: <ul style="list-style-type: none"> <li>▪ Vacuum feedthrough LEMO SWH.0S.304.CLLSV</li> <li>▪ Air-side cable with 2 LEMO connectors, 2 m</li> </ul>



Product no.	Description
P-899.VA	Vacuum feedthrough temperature sensor, to 10 <sup>-6</sup> hPa, 100 °C, consisting of: <ul style="list-style-type: none"> <li>▪ Vacuum feedthrough LEMO SWH.0S.303.CLLSV</li> <li>▪ Air-side cable with 2 LEMO connectors, 2 m</li> </ul>

Product no.	Description
P-203.01	Extension cable for PICA HVPZT actuators, 1 m
P-203.02	Extension cable for PICA HVPZT actuators, 2 m
P-203.03	Extension cable for PICA HVPZT actuators, 3 m
P-203.05	Extension cable for PICA HVPZT actuators, 5 m
P-203.10	Extension cable for PICA HVPZT actuators, 10 m
P-203.15	Extension cable for PICA HVPZT actuators, 15 m
Connector (m): FGG.0B.701.CJA.1173; connector (f): PHG.0B.701.CJL.1173	

Product no.	Description
P-892.01	Extension cable, for strain gauge sensors, LEMO connectors, 1 m
P-892.02	Extension cable, for strain gauge sensors, LEMO connectors, 2 m
P-892.03	Extension cable, for strain gauge sensors, LEMO connectors, 3 m
P-892.05	Extension cable, for strain gauge sensors, LEMO connectors, 5 m
P-892.10	Extension cable, for strain gauge sensors, LEMO connectors, 10 m
P-892.15	Extension cable, for strain gauge sensors, LEMO connectors, 15 m
Connector (m): FFA.0S.304.CLAC32; connector (f): PCA.0S.304.CLLC32	

Product no.	Description
P-899.01	Extension cable for temperature sensor, LEMO connectors, 1 m
P-899.02	Extension cable for temperature sensor, LEMO connectors, 2 m
P-899.03	Extension cable for temperature sensor, LEMO connectors, 3 m
P-899.05	Extension cable for temperature sensor, LEMO connectors, 5 m
P-899.07	Extension cable for temperature sensor, LEMO connectors, 7 m
P-899.10	Extension cable for temperature sensor, LEMO connectors, 10 m
P-899.15	Extension cable for temperature sensor, LEMO connectors, 15 m
Connector (m): FFA.0S.303.CLAC32; connector (f): PCA.0S.303.CLLC32	

➤ To order, contact our customer service department (p. 37).

### 3.6 Technical Features

#### 3.6.1 PICA Piezo Actuators

P-21x are PICA preloaded high-load piezo actuators for static and dynamic applications. They have a submillisecond response time and subnanometer resolution.

The piezo actuators have a friction-free, preloaded PICA Power piezo ceramic that is integrated in a stainless-steel housing. The high load capacity and internal preload makes them ideal for applications such as precision manufacturing and active vibration damping.

#### 3.6.2 Strain Gauge Sensors (SGS)

Strain gauge sensors derive the position information from their expansion. A strain gauge sensor consists of an electrically conductive film, the resistance of which changes with the strain. Strain gauge sensors are attached to the actuator and measure its displacement. The sensors are equipped with a full-bridge circuit that is insensitive to thermal drift, and assure optimum position stability in the nanometer range.

## 4 Unpacking

### NOTICE



#### **Destruction of the piezo actuator due to rapid discharging!**

If the P-21x is not connected to the electronics, the lines on the voltage connection must be short-circuited in order to prevent the piezo actuator from charging during temperature changes and compressive stresses. Unsuitable short-circuiting leads to an abrupt contraction of the piezo actuator due to excessively fast discharging. Abrupt contraction can destroy the piezo actuator.

- Remove the supplied shorting plug from the voltage connection of the piezo actuator only when this is necessary for installation or operation.
- Keep the shorting plug near the piezo actuator after removing it.

When the shorting plug has been removed, proceed as follows:

1. Discharge the piezo actuator (p. 32).
2. Connect the shorting plug provided to the voltage connector of the discharged piezo actuator. Do not short-circuit the piezo actuator in any other way.



Figure 3: Voltage connection of the P-21x with attached shorting plug

- 1 Voltage connection of the P-21x
- 2 P-202.01 shorting plug, in the scope of delivery

### **INFORMATION**

When handling the vacuum version of the piezo actuator, appropriate cleanliness must be ensured. At PI, all parts are cleaned before assembly. During assembly and calibration, powder-free gloves are worn. Afterwards, the piezo actuator is cleaned once again by wiping and shrink-wrapped twice in vacuum-compatible film.

- Touch the piezo actuator only with powder-free gloves.
- If necessary, wipe the piezo actuator clean after unpacking.

1. Unpack the P-21x with care.
2. Compare the contents with the scope of delivery according to the contract and the delivery note.
3. Inspect the contents for signs of damage. If any parts are damaged or missing, contact our customer service department (p. 37) immediately.
4. Keep all packaging materials in case the product needs to be returned.

# 5 Installation

## In this Chapter

General Notes on Installing ..... 17

Connecting the P-21x to the Protective Earth Conductor ..... 20

Mounting the P-21x ..... 21

Optional: Mounting a Tip ..... 22

Fixing the Load ..... 23

Optional: Connecting the Purge Air ..... 23

## 5.1 General Notes on Installing

**NOTICE**



**Destruction of the piezo actuator due to rapid discharging!**

If the P-21x is not connected to the electronics, the lines on the voltage connection must be short-circuited in order to prevent the piezo actuator from charging during temperature changes and compressive stresses. Unsuitable short-circuiting leads to an abrupt contraction of the piezo actuator due to excessively fast discharging. Abrupt contraction can destroy the piezo actuator.

- Remove the supplied shorting plug from the voltage connection of the piezo actuator only when this is necessary for installation or operation.
- Keep the shorting plug near the piezo actuator after removing it.

When the shorting plug has been removed, proceed as follows:

1. Discharge the piezo actuator (p. 32).
2. Connect the shorting plug provided to the voltage connector of the discharged piezo actuator. Do not short-circuit the piezo actuator in any other way.

**NOTICE**



**Destruction of the piezo actuator due to excessive loads!**

Excessive loads can destroy the P-21x.

- Do **not** exceed the maximum push/pull capacity according to the specifications (p. 39).

**NOTICE****Destruction of the piezo actuator due to mechanical overload!**

Torques, bending forces, shearing forces, and lateral forces can destroy the piezo actuator.

- Avoid torques and lateral forces on the tip of the P-21x.
- Do **not** exceed the maximum torque and the maximum shearing load on the tip according to the specifications (p. 39).
- Avoid torques on the base when the tip is tightly clamped.
- Make sure that the center of load of the moving system is on the motion axis of the piezo actuator.
- Use suitable structures or guide elements (e.g., ball tips or flexure guides) to avoid uneven load distribution.
- Pay attention to the information on parallelism in the "Dimensions" section (p. 43).
- Do **not** screw the piezo actuator tight at both ends.

**NOTICE****Damage due to unsuitable cables!**

Unsuitable cables can damage the P-21x and the electronics.

- Use cables provided by PI only to connect the P-21x to the electronics.

**NOTICE****Heating up of the P-21x during operation!**

The heat produced during operation of the P-21x can affect your application.

- Install the P-21x so that your application is not affected by the dissipating heat.

**INFORMATION**

Extended cables can affect the performance of the P-21x.

- Only use extension cables from PI (p. 12).

**INFORMATION**

When handling the vacuum version of the piezo actuator, appropriate cleanliness must be ensured.

- Touch the piezo actuator only with powder-free gloves.
- If necessary, wipe the piezo actuator clean.

**INFORMATION**

The outward motion of the tip corresponds to the positive direction of motion and is proportional to the operating voltage applied.

### Avoiding mounting errors

Piezo actuators may only be loaded axially. The following figures are to help you avoid mounting errors.

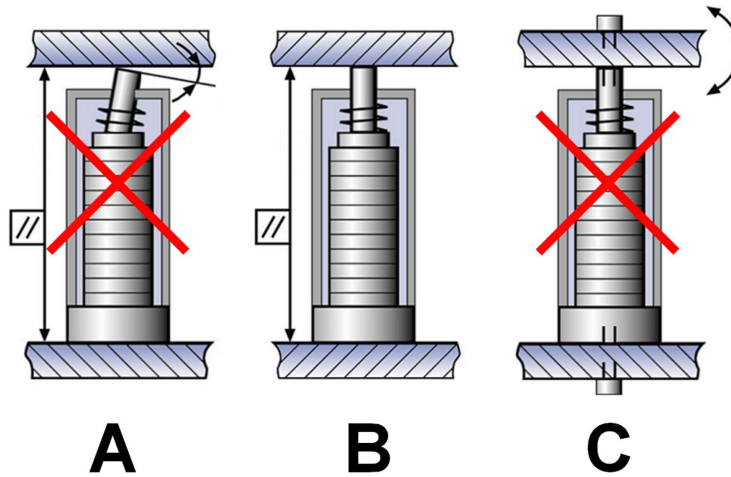


Figure 4: Not tightly screwed at both ends and no angles

- A: Wrong: Angular error at the tip
- B: Right: Axial loading of the actuator
- C: Wrong: Both ends of the actuator screwed in tight

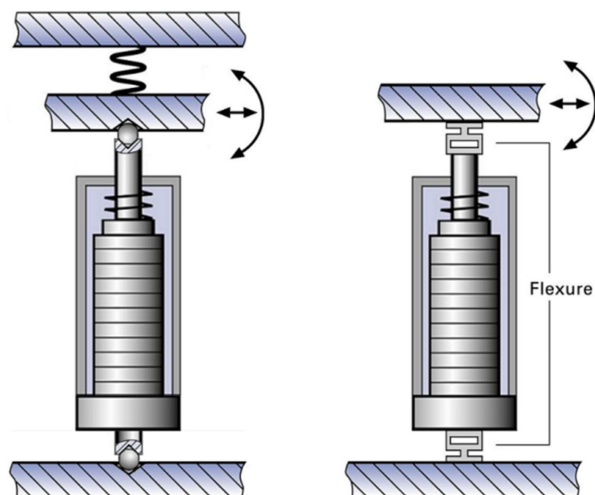


Figure 5: Ball tips or flexures for decoupling lateral forces and bending forces

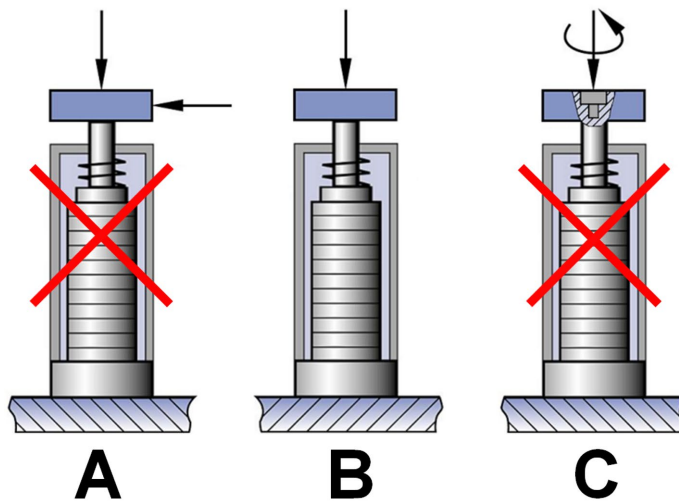


Figure 6: No lateral forces or torques

A: Wrong: Shearing force from lateral force

B: Right: Axial loading of the actuator

C: Wrong: Torsion from torque

## 5.2 Connecting the P-21x to the Protective Earth Conductor

### INFORMATION

- Pay attention to the applicable standards for connecting the protective earth conductor.

### INFORMATION

- If there is any vibration in your application, secure the screw connection for the protective earth conductor in a suitable manner (e.g., with conductive liquid adhesive) to prevent it from unscrewing by itself.

There is an M4 hole in the P-21x for connecting the protective earth conductor. This hole is marked with the symbol for the protective earth conductor (⏏). The position of the hole is shown in the product view (p. 9).

### Requirements

- ✓ You have read and understood the general notes on installing (p. 17).
- ✓ The P-21x is **not** connected to the electronics.
- ✓ The P-21x is discharged (p. 32) and short-circuited by the shorting plug (p. 11) provided.



**Tools and accessories**

- Suitable protective earth conductor: Cable cross section  $\geq 0.75 \text{ mm}^2$  and protective earth conductor resistance  $< 0.1 \Omega$  at 25 A
- M4 protective earth screw set (p. 11) supplied for connecting the protective earth conductor
- Suitable screwdriver

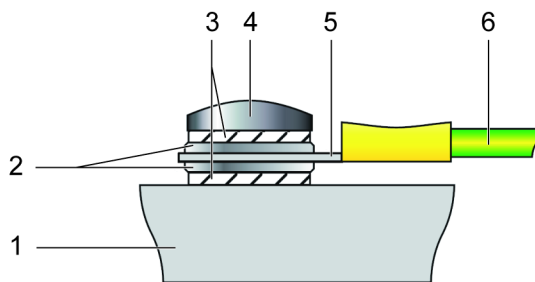


Figure 7: Connecting the protective earth conductor (profile view)

- |   |                            |
|---|----------------------------|
| 1 | Base of the P-21x          |
| 2 | Flat washer                |
| 3 | Lock washer                |
| 4 | Screw                      |
| 5 | Cable lug                  |
| 6 | Protective earth conductor |

**Connecting the P-21x to the protective earth conductor**

1. If necessary, attach a suitable cable lug to the protective earth conductor.
2. Use the M4 screw (together with the flat and lock washers) to attach the cable lug of the protective earth conductor to the threaded hole in the P-21x as shown in the profile view.
3. Tighten the M4 screw with a torque of 1.2 Nm to 1.5 Nm.
4. Make sure that the contact resistance at all connection points relevant for connecting the protective earth conductor is  $< 0.1 \Omega$  at 25 A.

**5.3 Mounting the P-21x****Requirements**

- ✓ You have read and understood the general notes on installing (p. 17).
- ✓ The P-21x is discharged (p. 32) and short-circuited by the shorting plug (p. 11) provided.

**Tools and accessories**

- M8 screw of suitable length; see "Dimensions" (p. 43)
- Suitable tools for tightening the screw
- Open-end wrench for fixing the base:
  - P-212: AF 15
  - P-216: AF 22

**Mounting the P-21x**

1. Fix the base of the P-21x: Use an open-end wrench with wrench flats that match the base.
2. Attach the P-21x to a suitable surface with an M8 screw. For this purpose, use the M8 mounting hole on the bottom of the base; see "Dimensions" (p. 43).
3. Remove the open-end wrench from the base.

## 5.4 Optional: Mounting a Tip

**INFORMATION**

Different mechanical connections to a load are made possible by optionally available flat or ball tips (p. 12).

**Requirements**

- ✓ You have read and understood the general notes on installing (p. 17).
- ✓ The P-21x is discharged (p. 32) and short-circuited by the shorting plug (p. 11) provided.

**Tools and accessories**

- Optionally available screw-in flat or ball tip (p. 12)
- Open-end wrench for holding the tip of the P-21x (p. 9) in place:
  - P-212: AF 7
  - P-216: AF 8

**Mounting a flat or ball tip**

1. Use an open-end wrench with a matching jaw size to hold the tip of the P-21x in place.
2. Screw the flat or ball tip into the mounting hole of the P-21x by hand.
3. Remove the open-end wrench from the tip.

## 5.5 Fixing the Load

### Requirements

- ✓ You have read and understood the general notes on installing (p. 17).
- ✓ The P-21x is discharged (p. 32) and short-circuited by the shorting plug (p. 11) provided.

### Tools and accessories

- Screw of suitable length (p. 43):
  - P-212: M5
  - P-216: M6
- Suitable screwdriver
- Open-end wrench for holding the tip of the P-21x (p. 9) in place:
  - P-212: AF 7
  - P-216: AF 8

### Fixing the load

1. Use an open-end wrench with a matching jaw size to hold the tip in place.
2. Insert a suitable screw into the mounting hole in the tip to secure the load; see "Dimensions" (p. 43).
3. Remove the open-end wrench from the tip.

## 5.6 Optional: Connecting the Purge Air

### NOTICE



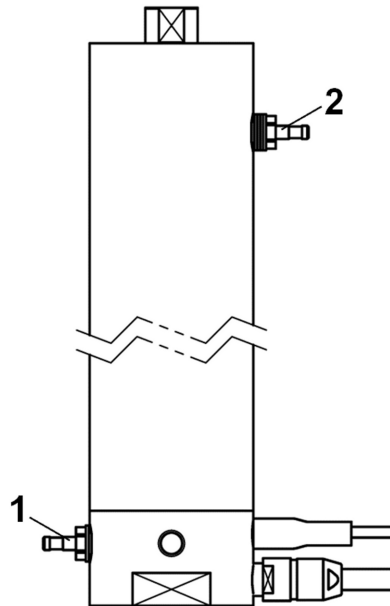
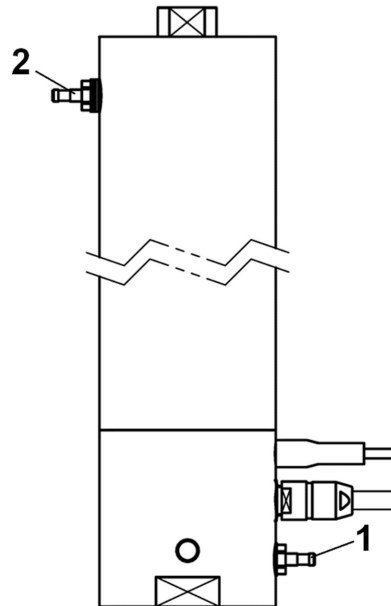
#### **Destruction of the piezo actuator by cooling too quickly!**

If the cooling is too fast, the resulting thermomechanical load can destroy the piezo actuator.

- Only connect the purge air to the piezo actuator when the piezo actuator has cooled down to room temperature.

### INFORMATION

The piezo actuator can be cooled with purge air when the P-21x has been ordered with the option "PT1000 temperature sensor and purge air connector for PICA high-voltage piezo actuators" (P-177.50) (p. 12).

**Purge air connector for P-177.50 option****P-212****P-216**

- 1 Inlet for purge air, M3-PK-2 plug nipple
- 2 Outlet for purge air, M3-PK-2 plug nipple

**Requirements**

- ✓ You have read and understood the general notes on installing (p. 17).
- ✓ The P-21x is discharged (p. 32) and short-circuited by the shorting plug (p. 11) provided.

**Tools and accessories**

- Hoses for feeding and discharging the purge air, suitable for M3-PK-2 plug nipple
- Suitable purge air:

The requirements on purge air quality can generally be met by running compressed air conformant to ISO 8573-1:2010.

Particulates: Class 2

Humidity: Class 4 (Temperature at least 3 °C above dew point)

Residual oil content: Class 1 (<0.01 mg/m<sup>3</sup>, measured at 1 bar and 20 °C)

The pressure in the purge air supply should be between 0.5 bar and 1 bar.

**Connecting the purge air**

1. Make sure that the piezo actuator has cooled down to room temperature.
2. Connect the purge air:
  - Attach the hose for feeding the purge air to the corresponding plug nipple on the P-21x (see above figure).
  - Attach the hose for discharging the purge air to the corresponding plug nipple on the P-21x (see above figure).

## 6 Starting and Operating

### In this Chapter

General Notes on Starting and Operating .....	25
Determining the Operating Parameters .....	28
Operating the P-21x .....	31
Discharging the P-21x .....	32

### 6.1 General Notes on Starting and Operating

#### **DANGER**



#### **Risk of electric shock if the protective earth conductor is not connected!**

If a protective earth conductor is not or not properly connected, dangerous touch voltages can occur on the P-21x in the case of malfunction or failure of the system. If there are touch voltages, touching the P-21x can result in serious injury or death from electric shock.

- Connect the P-21x to a protective earth conductor (p. 20) before starting.
- Do **not** remove the protective earth conductor during operation.
- If the protective earth conductor has to be removed temporarily (e.g., in the case of modifications), reconnect the P-21x to the protective earth conductor before restarting.

#### **CAUTION**



#### **Burning due to hot surface!**

The surface of the P-21x can heat up during operation. Touching the P-21x can lead to minor injuries from burning.

- Cool the P-21x, for example, with purge air (p. 23) so that the temperature of the surface does **not** exceed 65 °C.
- If sufficient cooling is not possible: Make sure that the hot P-21x **cannot** be touched.
- If sufficient cooling and protection against contact are not possible: Mark the danger zone in accordance with the legal regulations.

**NOTICE****Destruction of the piezo actuator due to electric flashovers!**

Using the P-21x in environments that increase the electrical conductivity can lead to the destruction of the piezo actuator by electric flashovers. Electric flashovers can be caused by moisture, high humidity, liquids, and conductive materials (e.g., metal dust). In addition, electric flashovers can also occur in certain air pressure ranges due to the increased conductivity of the air.

- Avoid operating the P-21x in environments that can increase the electrical conductivity.
- Only operate the P-21x within the permissible ambient conditions and classifications (p. 42).
- When using in a vacuum under 100 hPa:  
Do **not** operate the P-21x while evacuating or ventilating.

**NOTICE****Destruction of the piezo actuator due to dynamic forces!**

Dynamic forces can be generated during dynamic operation that cancel out the preload of the piezo actuator. Operating without a preload can destroy the actuator.

- Do **not** exceed the maximum push/pull capacity according to the specifications (p. 39).
- Pay attention to the notes in "Determining the Operating Parameters" (p. 28).

**NOTICE****Destruction of the piezo actuator due to excessive operating frequencies!**

Excessive operating frequencies can destroy the piezo actuator.

- Select the operating frequency so that the following conditions are met:
  - The operating frequency of the piezo actuator does not exceed one third of the resonant frequency:
    - Maximum operating frequency of the unloaded piezo actuator: Refer to "Maximum Ratings" (p. 41).
    - Maximum operating frequency of the loaded piezo actuator: Refer to "Calculating the Maximum Operating Frequency of the Loaded Piezo Actuator" (p. 29).
  - Any dynamic forces generated during operation do **not** exceed the maximum push/pull force of the piezo actuator (see "Calculating the Forces that Occur During Dynamic Operation" (p. 30) and "Specifications" (p. 39)).

**NOTICE****Reduced lifetime of the piezo actuator due to permanently high voltage!**

Applying a continuous high static voltage to piezo actuators leads to a considerable reduction in the lifetime of the piezo ceramic.

- When the P-21x is not used but the electronics remain switched on to ensure temperature stability, discharge the P-21x (p. 32).
- If possible: Limit the maximum operating voltage to 750 V during continuous operation.

**NOTICE****Operating voltage too high or incorrectly connected!**

Operating voltages that are too high or incorrectly connected can cause damage to the P-21x.

- Operate the P-21x only with controllers/drivers and original accessories from PI.
- Do **not** exceed the operating voltage range (p. 41) specified for the P-21x.
- Operate the P-21x only when the operating voltage is properly connected; refer to "Pin Assignment" (p. 48).

**NOTICE****Destruction of the piezo actuator due to overheating!**

Overheating can destroy the piezo actuator.

- Cool the piezo actuator, for example, with purge air (p. 23).
- Monitor the temperature of the piezo actuator with a temperature sensor (p. 12).
- Adjust the operating voltage, operating frequency and/or operating time so that the maximum operating temperature of the piezo actuator is not exceeded, see "Ambient Conditions and Classifications" (p. 42), "Maximum Ratings" (p. 41) and "Determining the Operating Parameters" (p. 28).

**NOTICE****Uncontrolled oscillation!**

Oscillation can cause irreparable damage to the P-21x. Oscillation is indicated by a humming noise and can be caused by the following:

- A change in the load and/or dynamics requires the servo control parameters to be adjusted.
- The P-21x is operated close to its resonant frequency, or with too high operating frequency.

If you notice oscillation:

- In closed-loop operation, switch off the servo mode immediately.
- In open-loop operation, stop the P-21x immediately.

**INFORMATION**

The outward motion of the tip corresponds to the positive direction of motion and is proportional to the operating voltage applied.

## 6.2 Determining the Operating Parameters

### 6.2.1 Overview of Limiting Factors

Limiting factors for the operation of the piezo actuator:

- Resonant frequency:  
The operating frequency must **not** exceed one third of the resonant frequency of the loaded piezo actuator:
  - Maximum operating frequency of the unloaded piezo actuator: Refer to "Maximum Ratings" (p. 41).
  - Maximum operating frequency of the loaded piezo actuator: Refer to "Calculating the Maximum Operating Frequency of the Loaded Piezo Actuator" (p. 29).
- Maximum push/pull force capacity (p. 39):  
The mass of the load to be moved and the operating frequency of the piezo actuator must be selected so that any dynamic forces generated during operation do not exceed the maximum push/pull force capacity of the piezo actuator. See "Calculating the Forces that Occur During Dynamic Operation" (p. 30).
- Maximum permissible operating temperature of the piezo actuator (p. 42):  
The greater the operating frequency, the operating voltage (peak-to-peak), and the capacitance of the piezo actuator, the greater the thermal power generated in the piezo actuator. The operating frequency, operating voltage and operating time must be selected so that the maximum permissible operating temperature of the piezo actuator is **not** exceeded. For the maximum permissible operating frequency without cooling, see column B of the table in "Maximum Ratings" (p. 41).  
  
When cooling measures (p. 23) are used, the limit values for the operating frequency, operating voltage and operating time increase. The use of a temperature sensor (p. 12) can prevent the piezo actuator from overheating.

#### **Peak and average output current of the electronics (p. 11) used:**

The electronics must be selected so that they fulfill the following requirements:

- The electronics can provide the required current. See "Calculating the Power Requirement for Sinusoidal Operation" (p. 30).
- The output current of the electronics does not exceed the maximum power consumption of the piezo actuator. See "Maximum Ratings" (p. 41).



### 6.2.2 Calculating the Effective Mass

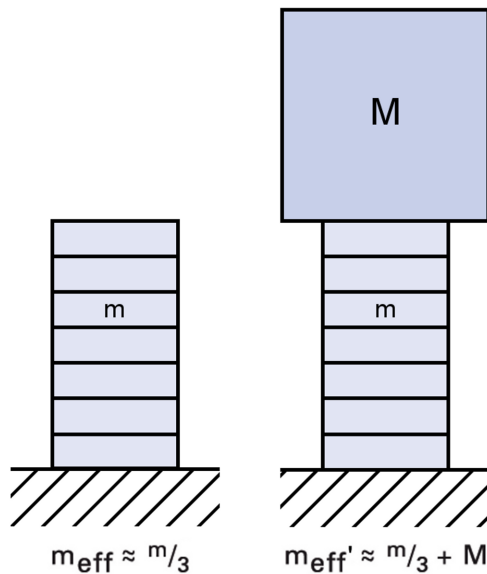


Figure 8: Calculation of the effective mass of a unilaterally clamped piezo stack actuator without load (left) and with additional load (right).

1. Find the mass  $m$  of your piezo actuator in the data table (p. 39).
2. Determine the additional load  $M$ .
3. Calculate the effective mass  $m_{\text{eff}}$  of the unloaded piezo actuator and  $m_{\text{eff}}'$  of the loaded piezo actuator with the formulas in the above figure.

### 6.2.3 Calculating the Maximum Operating Frequency of the Loaded Piezo Actuator

#### INFORMATION

In the following calculation, the maximum permissible operating temperature of the piezo actuator is **not** taken into account. During operation without cooling, the maximum operating temperature may already be exceeded when the operating frequency is still below the limit value calculated in the following.

- For the maximum permissible operating frequency without cooling, see column B of the table in "Maximum Ratings" (p. 41).

1. Calculate the resonant frequency of the loaded piezo actuator with the following formula:

$$f_0' = f_0 \sqrt{\frac{m_{\text{eff}}}{m_{\text{eff}}'}}$$

$f_0'$  = Resonant frequency of the loaded piezo actuator [Hz]

$f_0$  = Resonant frequency of the unloaded piezo actuator [Hz]; see "Data Table" (p. 39).

$m_{\text{eff}}$  = Effective mass; approx. 1/3 of the mass of the piezo actuator [kg]

$m_{\text{eff}}'$  = Effective mass  $m_{\text{eff}}$  + additional load  $M$  [kg]

See also "Calculating the Effective Mass" (p. 29).

2. Calculate the maximum operating frequency of the loaded piezo actuator with the following formula:

$$f_{\text{max}} = f_0'/3$$

$f_{\text{max}}$  = Maximum operating frequency of the loaded piezo actuator [Hz]

$f_0'$  = Resonant frequency of the loaded piezo actuator [Hz]

#### 6.2.4 Calculating the Forces that Occur During Dynamic Operation

- Calculate the dynamic forces that act on the piezo actuator during sinusoidal operation with the frequency  $f$ , with the following formula:

$$F_{\text{dyn}} \approx \pm 4\pi^2 \cdot m_{\text{eff}}' \left( \frac{\Delta L}{2} \right) f^2$$

$F_{\text{dyn}}$  = Dynamic force [N]

$m_{\text{eff}}'$  = Effective mass  $m_{\text{eff}}$  (approx. 1/3 of the mass of the piezo actuator) + additional load  $M$  [kg], see also "Calculating the Effective Mass" (p. 29)

$\Delta L$  = Displacement in the application (peak-to-peak) [m]

$f$  = Frequency [Hz]

**Example:** The dynamic forces at 1000 Hz, 2  $\mu\text{m}$  displacement (peak-to-peak) and 1 kg effective mass are approximately  $\pm 40$  N.

#### 6.2.5 Calculating the Power Requirement for Sinusoidal Operation

- Calculate the average current requirement for sinusoidal operation using the following formula:

$$I_a \approx f \cdot C \cdot U_{\text{p-p}}$$

- Calculate the peak current requirement for sinusoidal operation using the following formula:

$$I_{\text{max}} \approx f \cdot \pi \cdot C \cdot U_{\text{p-p}}$$

Variable	Description	Notes
$I_a$	Required average current of the amplifier (source / sink) [A]	It is essential that the power supply can supply enough current.
$I_{max}$	Required peak current of the amplifier (source / sink) [A]	The provided peak current depends on the internal storage capacity of the amplifier.
$f$	Operating frequency [Hz]	Details on the operating frequency see "Overview of Limiting Factors" (p. 28).
$C$	Capacitance of the piezo actuator [F (= As/V)]	See "Data Table" (p. 39) for the small-signal capacitance of the piezo actuator. For large-signal conditions, a safety factor of 70 % should be added to the small-signal capacitance.
$U_{p-p}$	Operating voltage (peak-to-peak) [V]	Voltage difference between positive and negative peak voltage

## 6.3 Operating the P-21x

### Requirements

- ✓ You have read and understood the general notes on starting and operating (p. 25).
- ✓ You have determined the operating parameters for your application (p. 28).
- ✓ You have installed the P-21x correctly (p. 17).
- ✓ You have provided suitable electronics that can supply the required currents (p. 30).
- ✓ You have read and understood the user manual for the electronics.

### Operating the P-21x

- Follow the instructions in the manual for the electronics (p. 11) when connecting, starting, and operating the P-21x.

## 6.4 Discharging the P-21x

The P-21x must be discharged in the following cases:

- When the P-21x is not in use but the electronics remain switched on to ensure temperature stability
- Before disassembling (e.g., for cleaning and transporting the P-21x) as well as for modifications
- If the P-21x is to be short-circuited with the shorting plug (p. 11) provided

### Requirements

- ✓ You have read and understood the general notes on installing (p. 17).

### Tools and accessories

- Electronics from PI (p. 11)

### Discharging a P-21x connected to the electronics

In closed-loop operation:

1. Switch off the servo mode on the electronics.
2. Set the piezo voltage to 0 V on the electronics.

In open-loop operation:

- Set the piezo voltage to 0 V on the electronics.

### Discharging a P-21x not connected to the electronics

- Connect the piezo actuator's voltage plug to the switched-off electronics from PI.

## 7 Maintenance

### In this Chapter

General Notes on Maintenance.....	33
Cleaning the P-21x .....	33

### 7.1 General Notes on Maintenance

The P-21x is maintenance-free.

### 7.2 Cleaning the P-21x

#### NOTICE



#### **Destruction of the piezo actuator by electric flashovers!**

The intrusion of fluids into the case of the piezo actuator can lead to the destruction of the piezo actuator by electric flashovers.

Before cleaning the P-21x:

1. Discharge the P-21x (p. 32).
2. Disconnect the voltage connection of the P-21x from the electronics.
3. Connect the voltage connection of the P-21x with the supplied shorting plug (p. 15).

#### NOTICE



#### **Damage from ultrasonic cleaning!**

Ultrasonic cleaning can damage the P-21x.

- Do **not** do any ultrasonic cleaning.

#### **Requirements**

- ✓ The P-21x is **not** connected to the electronics.
- ✓ The P-21x is discharged (p. 32) and short-circuited by the shorting plug (p. 11) provided.

### Cleaning the P-21x

Only when the piezo actuator is **not** used in vacuum:

- If necessary, clean the P-21x surface with a cloth dampened with a mild cleanser or disinfectant (e.g., isopropyl alcohol).

Only when the piezo actuator is used in vacuum:

- Touch the piezo actuator only with powder-free gloves.
- If necessary, wipe the piezo actuator clean.

## 8 Troubleshooting

Problem	Possible causes	Solution
No or limited motion	Cable not connected correctly	➤ Check the cable connections.
	Excessive load	➤ Do <b>not</b> exceed the maximum push/pull capacity according to the specifications (p. 39).
	The E-481 or E-482 electronics from PI has deactivated the voltage output due to overheating of the piezo actuator	<p>If the piezo actuator is equipped with the option "PT1000 temperature sensor and purge air connector for PICA high-voltage piezo actuators" (p. 12), the E-481 and E-482 electronics evaluate the signal of the temperature sensor.</p> <ol style="list-style-type: none"> <li>1. Switch off the electronics.</li> <li>2. Wait a few minutes until the piezo actuator has cooled down sufficiently.</li> <li>3. Switch the electronics on again.</li> </ol> <p>Preventive measures:</p> <ul style="list-style-type: none"> <li>➤ Reduce the operating voltage, operating frequency, and/or operating time.</li> <li>➤ Cool the piezo actuator.</li> </ul>
	Zero shift of the position sensor for the following reasons: <ul style="list-style-type: none"> <li>▪ Load in direction of motion</li> <li>▪ Ambient/operating temperature of the piezo actuator is much higher or lower than the calibration temperature (21 °C to 24 °C)</li> </ul>	➤ Readjust the sensor's zero-point (see manual for the electronics).
	Piezo actuator is depolarized due to overheating	➤ Contact our customer service department (p. 37).

Problem	Possible causes	Solution
Reduced accuracy	P-21x or controller has been replaced	➤ Recalibrate the axis displacement (see controller manual) or contact our customer service department (p. 37).
	Axes were mixed up during connection	With calibrated systems: ➤ Pay attention to the assignment of the axes when connecting several piezo actuators to a multi-channel controller. This assignment is indicated by labels on the devices.
The piezo actuator starts oscillating or positions inaccurately	Servo control parameters wrongly set because for example, the load was changed	<ol style="list-style-type: none"> <li>1. Switch off the servo mode of the corresponding axes immediately.</li> <li>2. Check the servo control parameter settings on the controller.</li> <li>3. Adjust the servo control parameters on the controller according to the load change.</li> </ol>
	Operating with an excessively high frequency	➤ Operate the piezo actuator at a maximum of one third of the resonant frequency. - Maximum operating frequency of the unloaded piezo actuator: Refer to "Maximum Ratings" (p. 41). - Maximum operating frequency of the loaded piezo actuator: Refer to "Calculating the Maximum Operating Frequency of the Loaded Piezo Actuator" (p. 29).

If the problem that occurred with your system is not listed in the table above or cannot be solved as described, contact our customer service department (p. 37).



## 9 Customer Service

For inquiries and orders, contact your PI sales engineer or send us an email ([service@pi.de](mailto:service@pi.de)).

- If you have any questions concerning your system, provide the following information:
  - Product and serial numbers of all products in the system
  - Firmware version of the controller (if applicable)
  - Version of the driver or the software (if applicable)
  - Operating system on the PC (if applicable)
- If possible: Take photographs or make videos of your system that can be sent to our customer service department if requested.

The latest versions of the user manuals are available for download (p. 3) on our website.



## 10 Technical Data

Subject to change. You can find the latest product specifications on the product web page at [www.pi.ws](https://www.pi.ws) (<https://www.pi.ws>).

### In this Chapter

Specifications .....	39
Dimensions .....	43
Pin Assignment .....	48

### 10.1 Specifications

#### 10.1.1 Data Table

	P-212.1S	P-212.2S	P-212.4S	P-212.8S	Unit	Tolerance
Operating voltage range	0 to 1000	0 to 1000	0 to 1000	0 to 1000	V	
<b>Motion and positioning</b>						
Travel range, closed loop	15	30	60	120	μm	
Resolution, closed loop	0.3	0.6	1.2	2.4	nm	typ.
Resolution, open loop	0.15	0.3	0.6	1.2	nm	typ.
Linearity error	0.2	0.2	0.2	0.2	%	typ.
<b>Mechanical properties</b>						
Static large-signal stiffness in motion direction*	90	60	34	18	N/μm	±20 %
Resonant frequency, no load	17	12	7	4.5	kHz	±20 %
Push/pull force capacity in motion direction	2000 / 300	2000 / 300	2000 / 300	2000 / 300	N	max.
Shear load	15	10	10	10	N	max.
Torque on tip	0.5	0.5	0.5	0.5	Nm	max.
<b>Drive properties</b>						
Piezo ceramic	PICA Power	PICA Power	PICA Power	PICA Power		
Electrical capacitance	47	90	180	370	nF	±20 %
<b>Miscellaneous</b>						
Operating temperature range	-40 to 80	-40 to 80	-40 to 80	-40 to 80	°C	
Mass	110	120	150	210	g	±5 %
Recommended electronics	E-462, E-464, E-470, E-472, E-421, E-481, E-482, E-508	E-462, E-464, E-470, E-472, E-421, E-481, E-482, E-508	E-462, E-464, E-470, E-472, E-421, E-481, E-482, E-508	E-462, E-464, E-470, E-472, E-421, E-481, E-482, E-508		

\* Dynamic small-signal stiffness is approx. 50 % higher.

The resolution of the system is only limited by the noise of the amplifier and measuring technology because PI piezo actuators are free of friction.

The operating voltage should not exceed 750 V in continuous operation.

Versions without sensor are available under the P-212.x0 and P-212.x0V order numbers.

Vacuum versions are available under the P-212.xxV order numbers.

Specifications for vacuum versions can differ.

	P-216.1S	P-216.2S	P-216.4S	P-216.8S	P-216.9S	Unit	Tolerance
Operating voltage range	0 to 1000	0 to 1000	0 to 1000	0 to 1000	0 to 1000	V	
<b>Motion and positioning</b>							
Travel range, closed loop	15	30	60	120	180	μm	
Resolution, closed loop	0.3	0.6	1.2	2.4	3.6	nm	typ.
Resolution, open loop	0.15	0.3	0.6	1.2	1.8	nm	typ.
Linearity error	0.2	0.2	0.2	0.2	0.2	%	typ.
<b>Mechanical properties</b>							
Static large-signal stiffness in motion direction*	210	140	80	50	32	N/μm	±20 %
Resonant frequency, no load	17	12	7	4.5	3	kHz	±20 %
Push/pull force capacity in motion direction	4500 / 500	4500 / 500	4500 / 500	4500 / 500	4500 / 500	N	max.
Shear load	60	36	23	23	23	N	max.
Torque on tip	1	1	1	1	1	Nm	max.
<b>Drive properties</b>							
Piezo ceramic	PICA Power	PICA Power	PICA Power	PICA Power	PICA Power		
Electrical capacitance	130	250	500	1000	1500	nF	±20 %
<b>Miscellaneous</b>							
Operating temperature range	-40 to 80	-40 to 80	-40 to 80	-40 to 80	-40 to 80	°C	
Mass	170	200	250	370	480	g	±5 %
Recommended electronics	E-462, E-464, E-470 • E-472 • E-421, E-481, E-482, E-508	E-462, E-464, E-470 • E-472 • E-421, E-481, E-482, E-508	E-462, E-464, E-470 • E-472 • E-421, E-481, E-482, E-508	E-462, E-464, E-470 • E-472 • E-421, E-481, E-482, E-508	E-462, E-464, E-470 • E-472 • E-421, E-481, E-482, E-508		

\* Dynamic small-signal stiffness is approx. 50 % higher.

The resolution of the system is only limited by the noise of the amplifier and measuring technology because PI piezo actuators are free of friction.

The operating voltage should not exceed 750 V in continuous operation.

Versions without sensor are available under the P-216.x0 and P-216.x0V order numbers.

Vacuum versions are available under the P-216.xxV order numbers.

Specifications for vacuum versions can differ.

### 10.1.2 Maximum Ratings

P-21x piezo actuators are designed for the operating data specified in the table below.

The permissible maximum values apply to operation with a sinusoidal signal. If you want to operate the piezo actuator with a square wave signal at a high frequency, contact our customer service department (p. 37).

#### Additional information on the maximum ratings table

- Maximum operating frequency without load, without considering thermal aspects, column A:





The value corresponds approximately to one third of the resonant frequency of the unloaded piezo actuator. For further restrictions, see "Overview of Limiting Factors" (p. 28).

- Maximum operating frequency without load, considering thermal aspects, column B:

In order to prevent the maximum permissible operating temperature from being exceeded, the operating frequency of the unloaded, **uncooled** piezo actuator must not exceed the specified frequency when the operating voltage is **1000 V peak-to-peak**. In the case of smaller amplitudes of the operating voltage and/or the use of cooling measures, higher operating frequencies are possible. For further restrictions, see "Overview of Limiting Factors" (p. 28).

- Maximum power consumption:

The value corresponds to the power consumption of the unloaded, uncooled piezo actuator that is operated at a voltage of **1000 V peak-to-peak** with the operating frequency from column B of this table.

Piezo actuator*	Maximum operating voltage range	Maximum operating frequency without load		Maximum power consumption
		A: Without considering thermal aspects	B: Considering thermal aspects	
				
P-212.1x	0 V to 1000 V	5.2 kHz	29 Hz	8 W
P-212.2x	0 V to 1000 V	3.5 kHz	24 Hz	13 W
P-212.4x	0 V to 1000 V	2.2 kHz	22 Hz	25 W
P-212.8x	0 V to 1000 V	1.3 kHz	20 Hz	46 W
P-216.1x	0 V to 1000 V	5.7 kHz	17 Hz	13 W
P-216.2x	0 V to 1000 V	4 kHz	14 Hz	21 W
P-216.4x	0 V to 1000 V	2.3 kHz	13 Hz	41 W
P-216.8x	0 V to 1000 V	1.5 kHz	12 Hz	74 W
P-216.9x	0 V to 1000 V	1 kHz	11.5 Hz	108 W

\* The letter x in the piezo actuator's product number stands for the various models (p. 7).

### 10.1.3 Ambient Conditions and Classifications

The following ambient conditions and classifications for the P-21x must be observed:

Area of application	For indoor use only	
Maximum altitude	2000 m	
Air pressure	P-21x.xx models: 1100 hPa to 100 hPa	P-21x.xxV models: 1100 hPa to 100 hPa 1 hPa to 10 <sup>-6</sup> hPa
Relative humidity	Highest relative humidity 80 % for temperatures up to 31 °C Decreasing linearly to 50 % relative humidity at 40 °C	
Operating temperature	P-21x.xx models: –40 °C to 80 °C	P-21x.xxV models: –40 °C to 150 °C
Storage temperature	–20 °C to 80 °C	
Transport temperature	–20 °C to 80 °C	
Maximum bakeout temperature (vacuum-compatible models only)	P-21x.xxV piezo actuators: 150 °C Vacuum feedthroughs (p. 12): 100 °C	
Overvoltage category	II	
Protection class	I	
Degree of pollution	1	
Degree of protection according to IEC 60529	IP20	

## 10.2 Dimensions

### 10.2.1 P-21x Piezo Actuator

Dimensions in mm. Note that the decimal points are separated by a comma in the drawings.

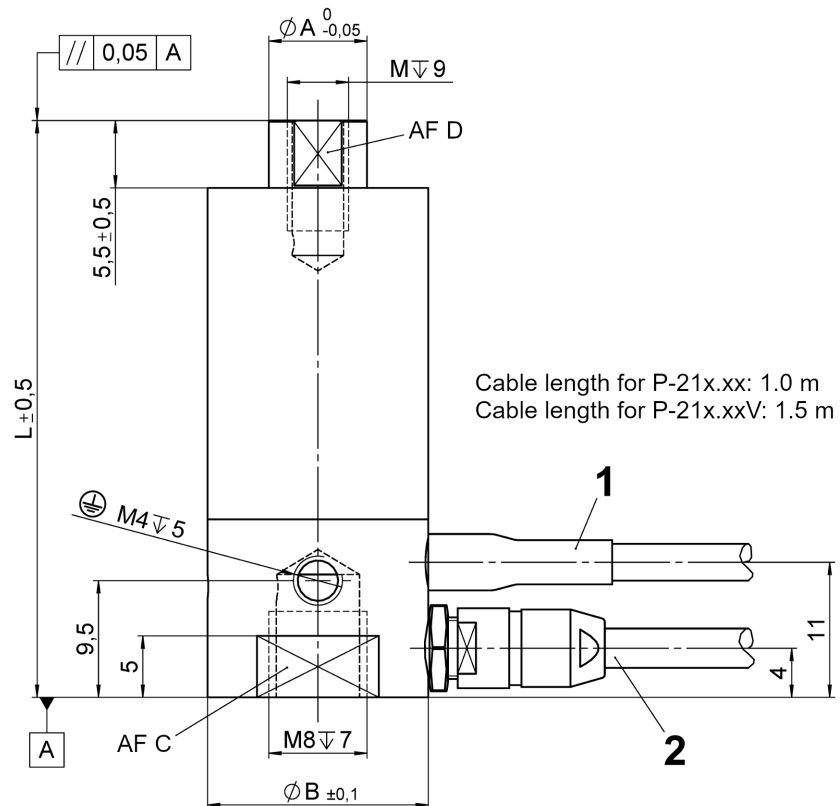


Figure 9: P-21x

1: Sensor (only with models with position sensor and/or with P-177.50 option)

2: Piezo

	L	A	B	C	D	M
P-212.1x	47	8	18	15	7	5
P-212.2x	60	8	18	15	7	5
P-212.4x	86	8	18	15	7	5
P-212.8x	139	8	18	15	7	5
P-216.1x	47	10	25	22	8	6
P-216.2x	60	10	25	22	8	6
P-216.4x	86	10	25	22	8	6
P-216.8x	139	10	25	22	8	6
P-216.9x	191	10	25	22	8	6

### 10.2.2 P-21x with P-177.50 Option (Temperature Sensor and Purge Air Connector)

If the P-21x has been ordered with the option "PT1000 temperature sensor and purge air connector for PICA HVPZT" (P-177.50) (p. 12), the actuator differs from the standard model in the following points:

- The piezo actuator has the following diameter:
  - P-212: 25 mm
  - P-216: 30 mm
 See Ø B in the drawing in the "Dimensions" section (p. 43).
- Plug nipples M3-PK-2 for purge air connector are available

	P-212	P-216
<b>Position of the purge air inlet</b>	In the base of the piezo actuator across from the cable exit, 9.5 mm above the lower edge of the base	In the base of the piezo actuator below the cable exit, 8 mm above the lower edge of the base
<b>Position of the purge air outlet</b>	In the case tube of the piezo actuator above the cable exit, precise position upon request	In the case tube of the piezo actuator across from the cable exit, precise position upon request

- Contact our customer service department (p. 37) for details on the position of the plug nipples.

### 10.2.3 P-21x with the P-706.00 Option (Water-Resistant Housing)

The dimensions of the P-21x with water-resistant case are supplied on request.

- Contact our customer service department (p. 37).



### 10.2.4 P-176.B12 Ball Tip

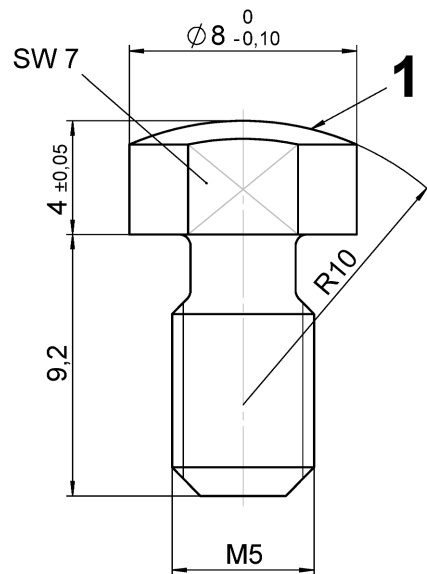


Figure 10: P-176.B12 (1 = contact surface hardened and polished)

### 10.2.5 P-176.F16 Flat Tip

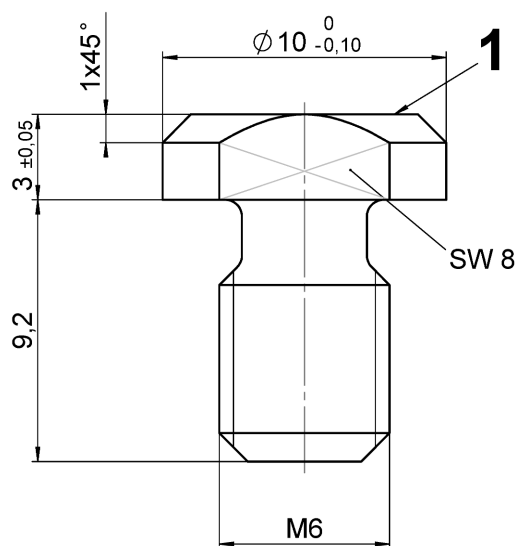


Figure 11: P-176.F16 (1 = contact surface hardened and polished)

### 10.2.6 P-176.10 Magnetic Adapter

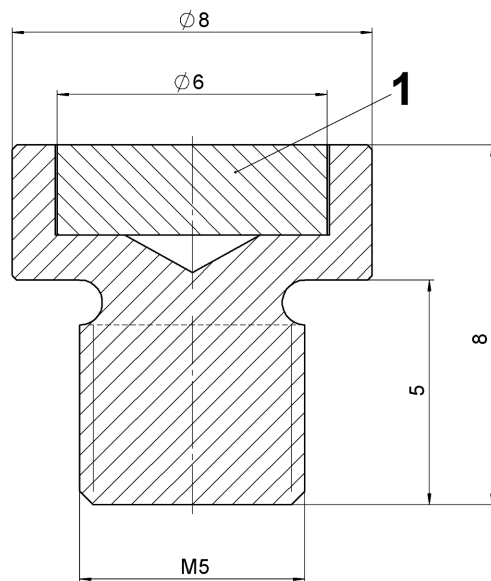


Figure 12: P-176.10 (1 = magnet, Ø 6x2)

### 10.2.7 Vacuum Feedthrough for High-Voltage Piezo Actuators

LEMO SJG.0B.701.CJA.1173 (part of the P-203.VA option for high-voltage piezo actuators)

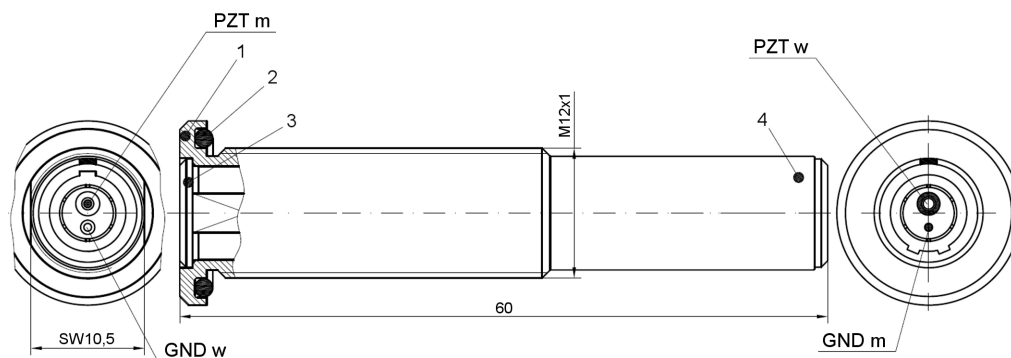


Figure 13: Vacuum feedthrough LEMO SJG.0B.701.CJA.1173

Designation	Description
1	Outer body
2	O-ring, Ø 12x1.5
3	LEMO device socket, "J" coded, EGJ.0B.701.CJA, flange side (atmosphere)
4	LEMO device socket, "G" coded, EGG.0B.701.CJL, vacuum side
PZT m	High-voltage contact, male, vacuum side

Designation	Description
GND w	Female contact, GND, vacuum side
PZT w	High-voltage contact, female, flange side (atmosphere)
GND m	Male contact, GND, flange side (atmosphere)

### 10.2.8 Vacuum Feedthroughs for Sensors

The dimensions of the following vacuum feedthroughs are identical:

- LEMO SWH.0S.304.CLLSV (part of the P-892.VA option for SGS)
- LEMO SWH.0S.303.CLLSV (part of the P-899.VA option for temperature sensor)

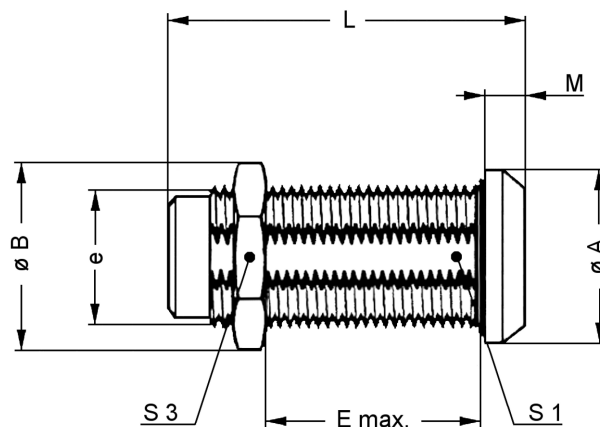


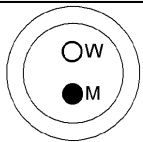
Figure 14: LEMO SWH.0S.30x.CLLSV

A	B	e	E	L	M	S1	S3
14 mm	13.8 mm	M10x0.75	17 mm	34 mm	2.0 mm	9.0 mm	12 mm

### 10.3 Pin Assignment

#### 10.3.1 Voltage Connection

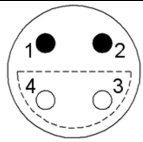
LEMO FGG.0B.701.CJA.1173

Connector (front view)	Pin	Signal	Function
	W (female)	Input	Piezo voltage 1000 V
	M (male)	GND	Ground

The connector shell is connected to the cable shield.

#### 10.3.2 Connection of the Position Sensor

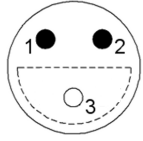
LEMO FFA.0S.304.CLA

Connector (front view)	Pin	Signal	Function
	1	Input	Supply voltage for strain gauge sensor
	2	Output	Sensor signal 1
	3	Output	Sensor signal 2
	4	GND	Ground

The connector shell is connected to the cable shield.

#### 10.3.3 Connection of the Temperature Sensor

LEMO FFA.0S.303.CLA

Connector (front view)	Pin	Signal	Function
	1	Output	Temp_SA
	2	Output	Temp_S
	3	GND	Ground

The connector shell is connected to the cable shield.

## 11 Old Equipment Disposal

In accordance with EU law, electrical and electronic equipment may not be disposed of in EU member states via the municipal residual waste.

Dispose of your old equipment according to international, national, and local rules and regulations.

In order to fulfill its responsibility as the product manufacturer, Physik Instrumente (PI) GmbH & Co. KG undertakes environmentally correct disposal of all old PI equipment made available on the market after 13 August 2005 without charge.

Any old PI equipment can be sent free of charge to the following address:

Physik Instrumente (PI) GmbH & Co. KG  
Auf der Roemerstr. 1  
D-76228 Karlsruhe, Germany





## 12 European Declarations of Conformity

For the P-21x, declarations of conformity were issued according to the following European statutory requirements:

Low Voltage Directive

EMC Directive

RoHS Directive

The standards applied for certifying conformity are listed below.

Safety (Low Voltage Directive): EN 61010-1

EMC: EN 61326-1

RoHS: EN IEC 63000

